

MassDEP Chapter 91 Waterways Licenses At Confluence of Mystic and Malden Rivers

1. River's Edge
Lic # 11377 (2006)

**2. Tufts
Boathouse**
Lic # 9937/38 (2004)

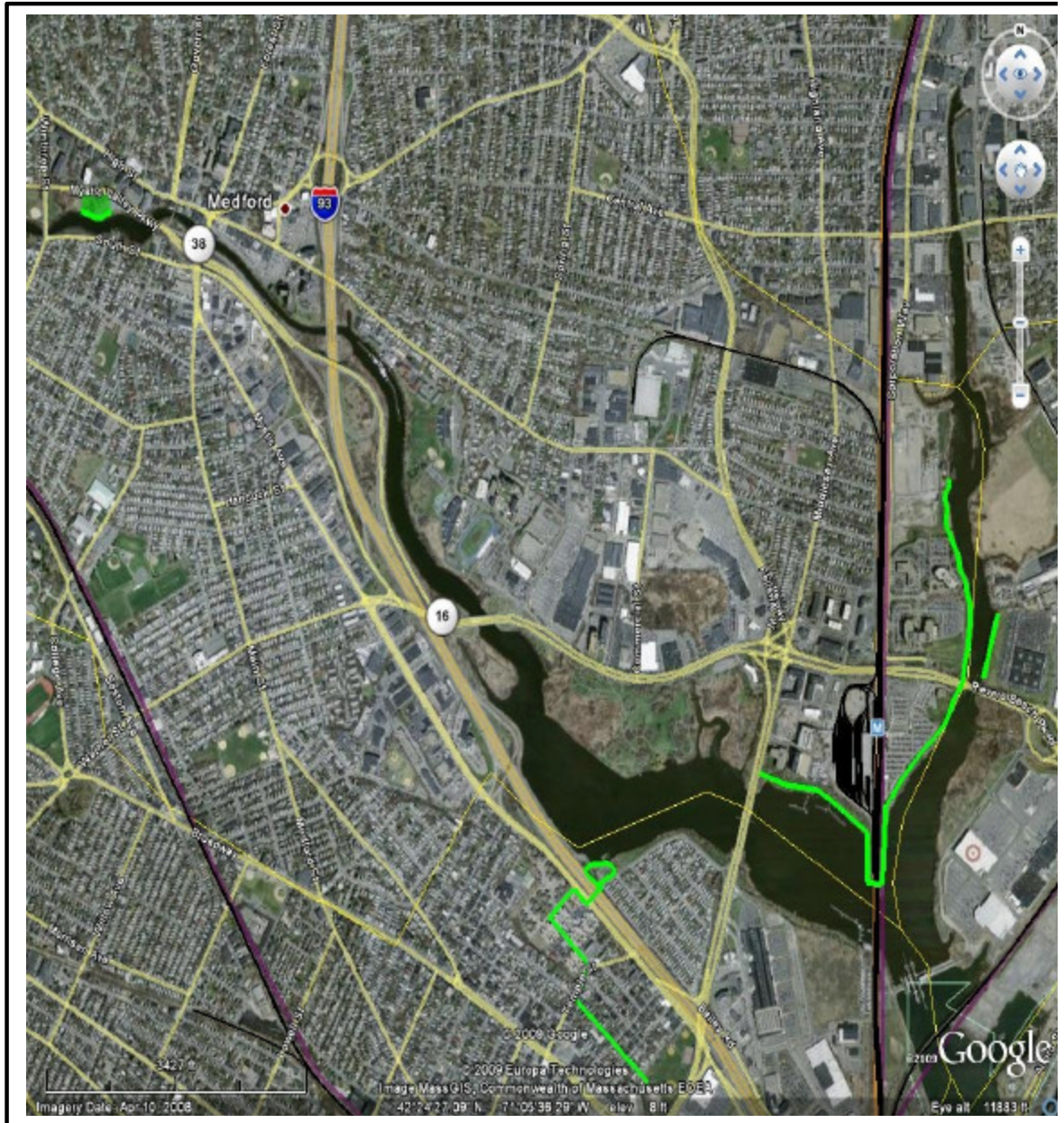
**3. Little Creek
Culvert**
Lic # 9047 (2001)

Wellington Center
4. I #2432 (1990)
5. II & III
Lic # 2433 (1990)
6. IV #9122 (2001)

7. Radio Station
Lic # 5333 (1996)

**8. Gateway
Shopping
Center**
Lic# 8530 (1998)

**9. DCR Mystic
Wellington
Yacht Club,**
License # 2848
Issued: 1992



10. Mystic Center, License # 1919, Issued: 1989

11. DCR Riverside Yacht Club, License # 3481, Issued: 1993

12. City of Medford School, License # 8523, Issued: 2000

13. IKEA Store @ Assembly Square, License # 12383, Issued: 2009

MassDEP Chapter 91 Waterways Licenses At Confluence of Mystic and Malden Rivers

More Greenway created through chapter 91 licensing requirements

- approximately 46.11 acres of filled tidelands turned into waterfront parkland
- waterfront walkways link existing development sites together
- public parking provided at private developments for park use
- landscaping features include trees, benches, lighting and clear signage

Public: Private Partnerships establish long lasting maintenance commitments

- Existing Mass DCR parkland linked together through private tideland development
- Private developers provided park easements to the Mass DCR
- Private developers maintain park features throughout term of the c91 license

Recreational Boating is celebrated and encouraged along the rivers

- Tufts Boathouse re-introduces rowing to the Malden River
- Three existing Yacht Clubs
- Public boat ramps provided and maintained by private licensees
- Canoe Launches on Malden and Mystic Rivers
- Removal of 2 sunken barges and debris along river's edge increase navigation and wetland health

For more information contact Andrea Langhauser, Senior Planner, MassDEP
Waterways Regulation Program, Boston, Andrea.Langhauser@state.ma.us